

# STUDIO TWO

29-31 BREWERY ROAD, N7

## FEATURES

- 9.5m wide infinity cove
- High-resolution LED screen
- Lighting rig
- Hair, makeup and styling room
- Kitchen, lounge and dining mezzanine
- Vestibule entrance lounge area
- Toilets and shower

## DIMENSIONS

Total area: 380sqm/4,090 sqft

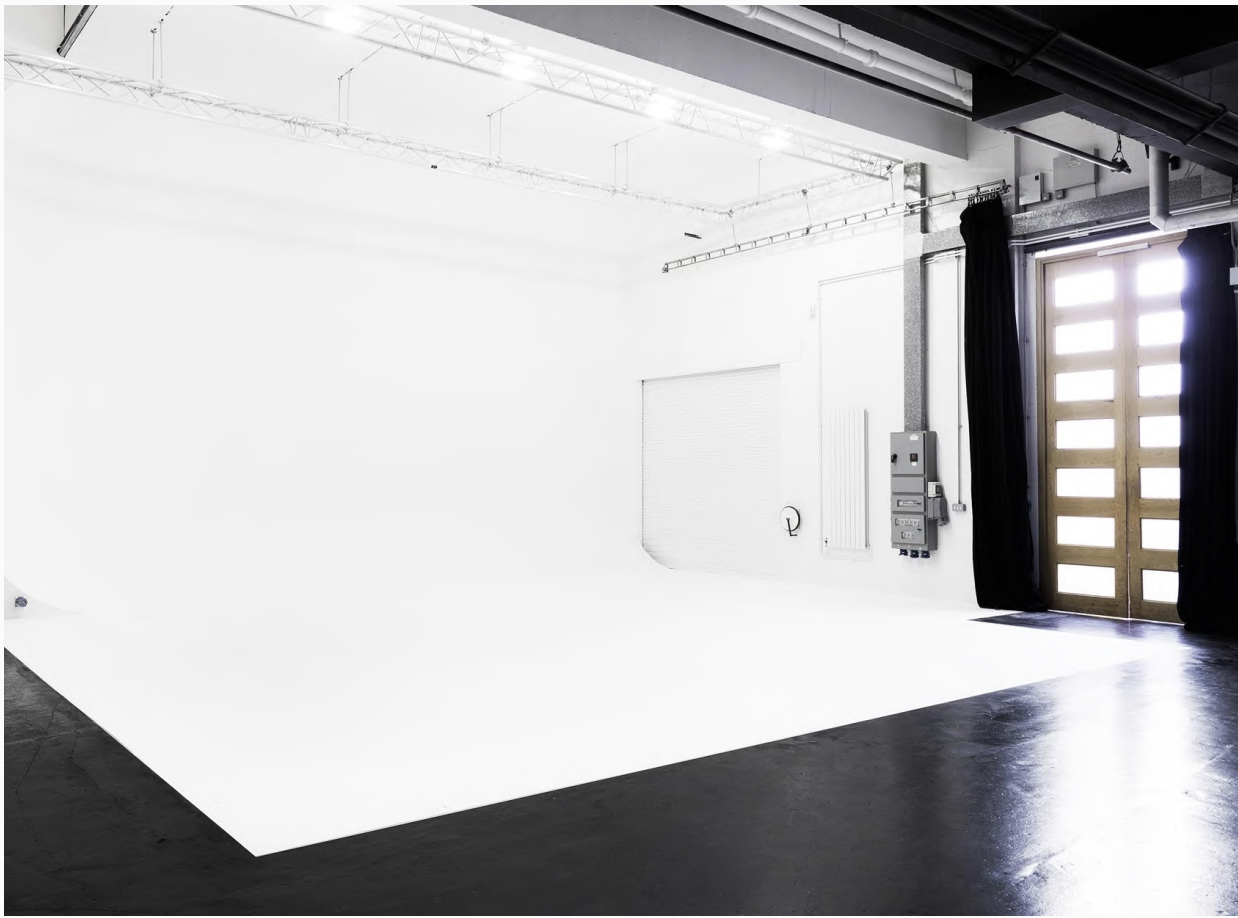
Ceiling height: 5.2m / 17.1ft (floor to rig)

Cove width: 9.5m / 31.1ft

Cove depth: 8.7m / 28.6ft







Infinity Cove



LED Screen



Mezzanine kitchen and dining



Mezzanine lounge



Vestibule entrance lounge



Hair, makeup and styling area



# LED SCREEN

pixl.

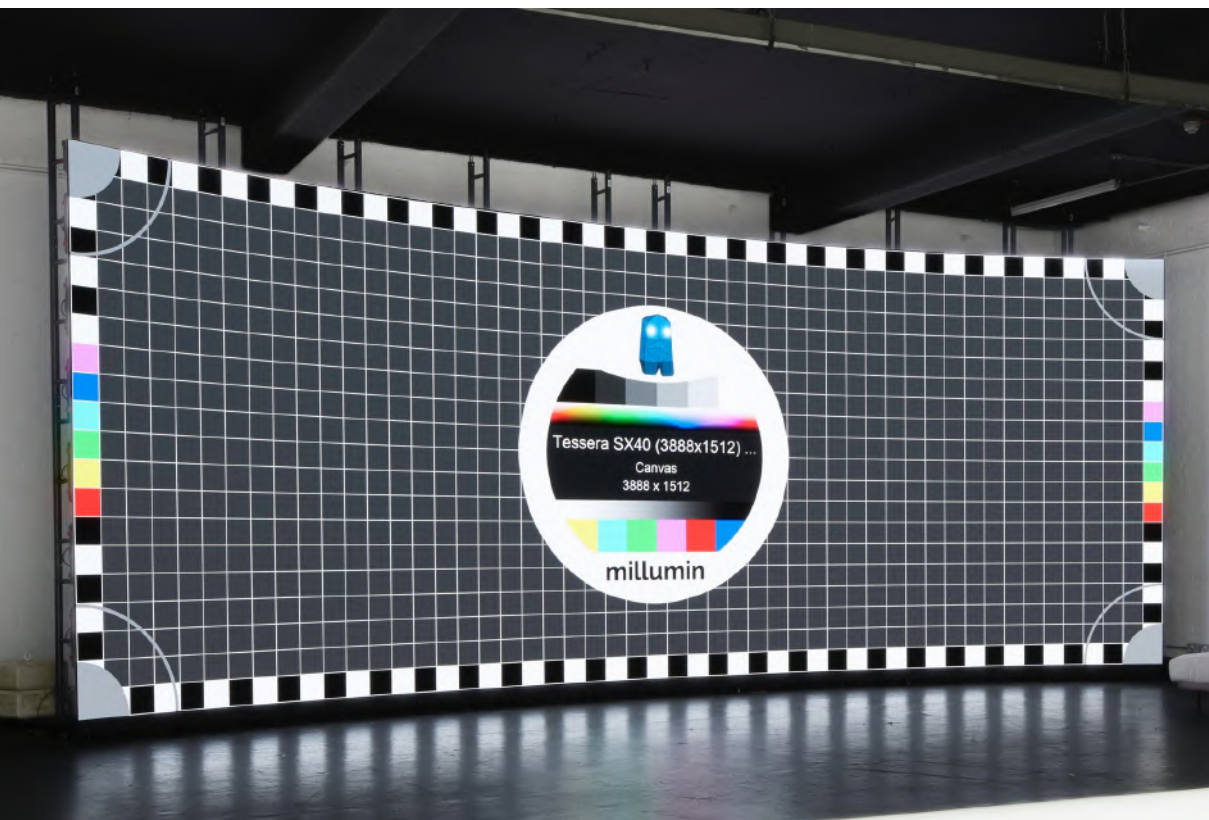
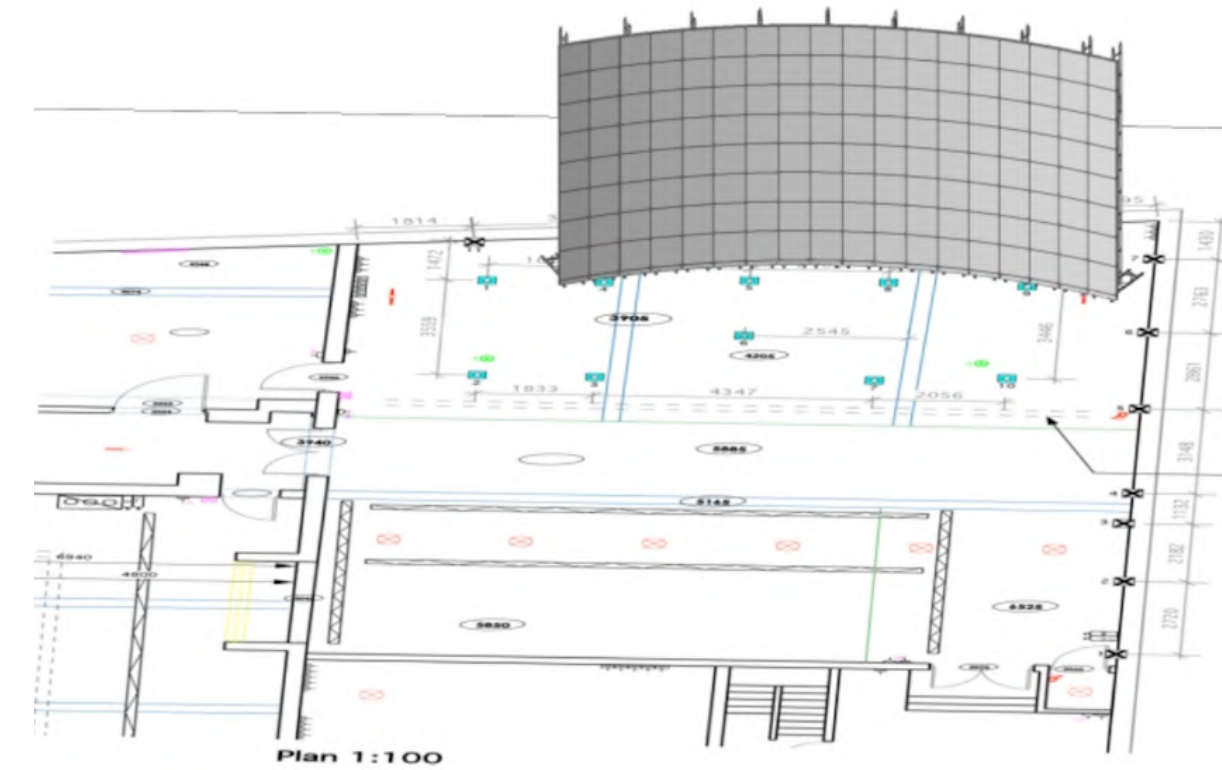
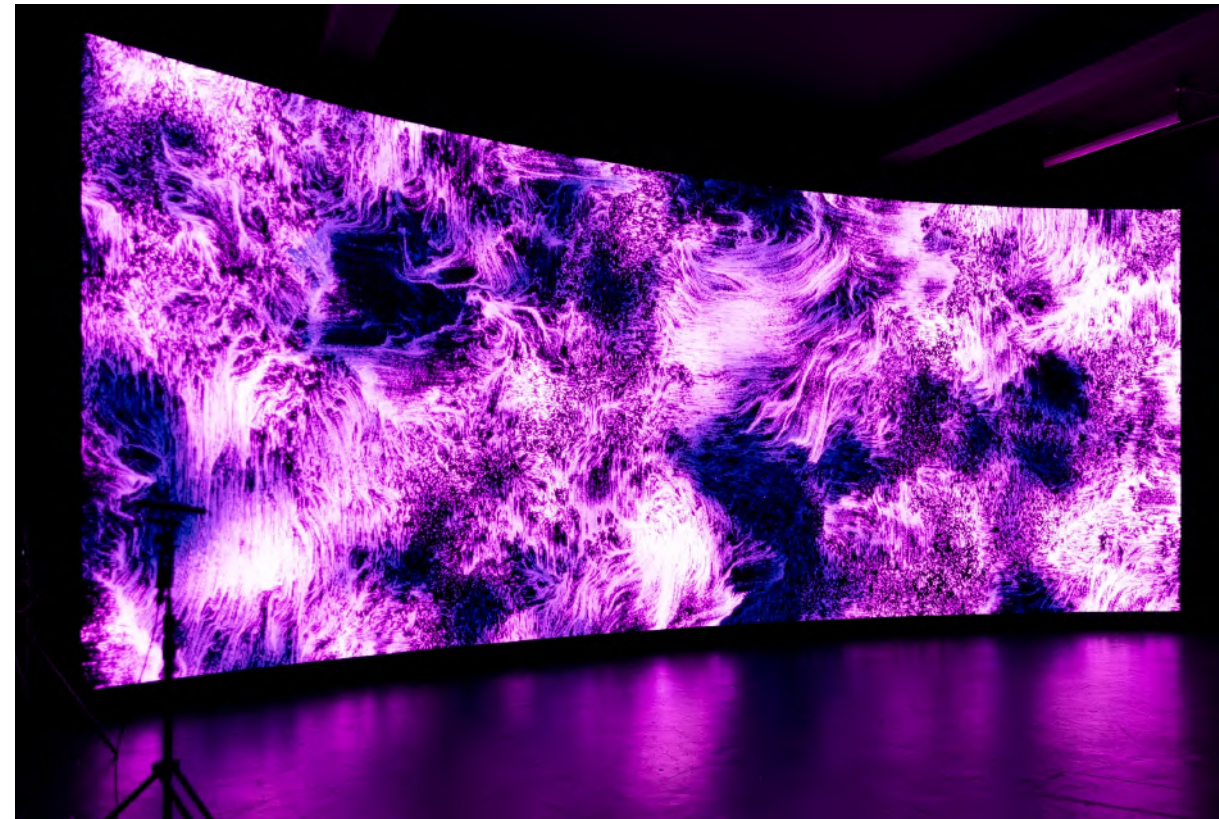
Studio 02 is equipped with the Pixl Evolution 9x3.5m Super High-Res ROE Ruby LED screen.

With a Super High-Res 2.3mm pitch, this dynamic LED screen transforms and allows you to create extraordinary canvases, so you can capture the content you need, from mixed media marvels to captivating digital backdrops.

Please get in touch to learn more about the capabilities of the LED screen.

For LED enquiries contact Pixl Evolution: [info@pixl.live](mailto:info@pixl.live)

For studio bookings contact Big Sky Studios: [production@bigskylondon.com](mailto:production@bigskylondon.com)







**LIGHTING RIG:**

10-ton LOLER-certified rig  
(1 ton max per sqm)



**POWER:**

1 x 200 amp three phase feed  
1 x 125 amp three phase outlets  
or 6 x 63 amp single phase outlets

**A** Wrap over cove  
9.5m width x 8.7m depth x 6.5m height  
31.1ft width x 28.6ft depth x 21.4ft height

**B** Shutter Doors  
(Can connect to Studio 01)

**C** Styling and dressing room  
4.9m x 5.4m  
16.2ft x 17.8ft

**D** Hair and makeup area  
4.2m x 5.4m  
13.9ft x 17.8ft

**E** Vestibule entrance lounge

**Mezzanine Floor**

F Dining area  
G Kitchen  
H Lounge  
I Toilets and shower

